

# iRis *DVR* 5

The Videoscope



# iRis **DVR 5**

## The Videoscope

### Unique benefits and features



#### 5.0" / 12.7cm display

The world's largest integrated display (5.0" / 12.7cm) on a portable video-scope system provides outstanding razor-sharp images.



#### CCD Image Sensor

The CCD "chip on the tip" image sensor is the core element of the iRis DVR 5 and provides a high image quality.



#### 3h operation time

Rechargeable high-capacity battery extends uninterrupted operation time up to 3 hours.



#### 360° articulation

Thanks to the non-motorized infinite joystick control, users can navigate the probe responsively with tactile feel and precise tip positioning.



#### 2.97lb / 1.35Kg

The iRis DVR 5 is one of the lightest portable videoscopes on the market. Compact dimensions and the robust design are further outstanding features.



#### 360° ergonomic

The iRis DVR 5 is the world's first portable videoscope with a 180° rotating display unit and/or a 180° rotatable handle.



#### 284°F / 140°C Resistance

With an ambient temperature below 284°F/140°C it is possible to operate the videoprobe up to 5 minutes without any damage.



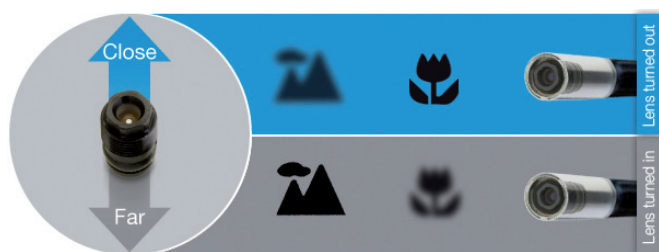
#### High Power LED

Bright, economical and innovative. The high-power LED is characterized by high-intensity white light, 5000 hours of operating time and low energy consumption.



Please note: the product representation corresponds to the original product size (scale 1:1)

#### SmartFocus



Close focus and far focus with only one objective lens. It's not necessary anymore to buy another objective lens, if a different focal length is needed. In comparison with fix focus lenses, SmartFocus lenses save not only the complicated lens changing process, they also save additional/hidden costs. SmartFocus lenses with different field of view (FOV), f-stops (f-stop) and depth of field (DOF) are available.

See more - be sure.



## Advanced benefits and features



### Digital video recording

Records every single movement of a component, fully digitally, in brilliant video quality.



### Image capturing

At the push of a button, high-res inspection images are captured and stored on SDHC memory card.



### 3.5x zoom

Thanks to the 3.5 times zoom, users won't miss any detail of the visual inspection.



### Adjustable light intensity

3-stage adjustable LED prevents overexposure, suppresses image noise arising from readjustment of camera electronics.



### Measurement

The iRis DVR 5 uses the comparative measurement method to determine the size of a damaged spot.



### Image annotation

By means of the integrated text generator, information can be directly written on the inspection image.



### Up to 32GB storage

Approx. 32,000 images or 500 hours of video recording fit onto a 32GB SDHC memory card.



### Camera control

The iRis DVR 5 has different camera modes to provide well-balanced inspection images, even in extreme situations.



### QuickStart

Switch on and start. It's that simple. No cables, no plugs, no long booting process, no warm-up phase.



### On-screen menu

Even first time users are intuitively guided through the on-screen menu.



### Mains power supply

The iRis DVR 5 can also be powered with an AC adapter connected to mains power.



### SmartView

The SmartView technology allows an external monitor or display to be connected to the iRis DVR 5 and enables viewing by a second person.



### Robust and reliable

Only high-grade materials are used in the iRis DVR 5. The extremely pliable articulation section ensures precision in control and provides maximum articulation angles.

### QuickStart



**Battery**  
No Cables  
Aucun câblage  
Keine Kabel



**Power**  
One push  
Un seule bouton  
Ein Knopfdruck



**Start**  
Ready to Inspect  
Démarrer l'inspection  
Inspektion beginnen



# iRis **DVR** 5

## The Videoscope

### Operating unit

Display size:	5.0" (12.7cm) TFT colour
Display resolution:	VGA (640x480 pixel)
Operating system:	Real-time operating system, with on-screen menu
User interface:	Direct action keys / function keys / arrow keys
Languages:	English, German, Polish, French, Spanish, Italian, Turkish
Video interface:	Composite video-out (BNC)
Power supply, primary:	Rechargeable Li-ion battery (charger and battery are provided in delivery set)
Power supply, secondary:	12V adapter (optional asseccory)

### Documentation

Video format:	AVI (.avi) (with time and date stamp)
Image format:	BMP (.bmp) (with time and date stamp)
Storage:	SDHC memory card up to 32GB (FAT32) (8GB is provided in delivery set)

### Camera control

Image sensor:	High resolution Super HAD CCD image sensor
White balance:	Factory default or user defined
AGC level (gain control):	Adjustable
Gamma:	Adjustable

### Image control

Zoom:	X 3.5
Invert:	Horizontal and vertical image inversion
Brightness:	Adjustable
Contrast:	Adjustable
Colour:	Adjustable
Text annotation:	Built-in full screen text overlay generator

### Illumination

Type:	High-power LED with high transmission fiberoptics
Illumination control:	3 steps
Colour temperature:	approx. 6500k
Average lamp lifetime:	approx. 5000h

### Probe

Diameter:	4.0mm	6.0mm	8.0mm
Working length:	4.9 - 13.1ft (1.5 - 4.0m)	4.9 - 13.1ft (1.5 - 7.5m)	4.9 - 13.1ft (1.5 - 7.5m)
Articulation (bending neck):	4-way / 360° control	4-way / 360° control	4-way / 360° control
Articulation angle* L/R   U/D:	100°/100°   100°/100°	100°/100°   160°/130°	100°/100°   160°/130°
Integrated objective lens:	X	-	-
Interchangeable objective lens:	-	X	X
Side view tip adapter:	O (only with int. objective lens)	X	x
Braid:	Multi-layer tungsten braid on PU jacket		

### Construction

Ergonomics:	± 90° rotatable display unit, alt. ±90° rotatable scope handle
System weight:	1,35Kg
Dimensions:	180mm X 105mm X 45mm
Housing:	Rugged PU, with integrated rubber shock caps
Protection class:	IP53

### Operating environment

Tip operating temperature:	-13°F to 176°F (-25°C to +80°C) (284°F/140°C less than 5 Minutes)
System operating temperature:	-13°F to 115°F (-25°C to +46°C)
Storage temperature:	-13°F to 140°F (-25°C to +60°C)
Relative humidity:	95% max. - non condensing
Waterproof:	Probe and distal end up to 14.7 psi (1 bar- 10.2m H <sub>2</sub> O)
Resistance:	Probe and distal end to oils and saline (5%)
Carrying Case	508mm x 373mm x 147mm / 4,5kg

### Interchangeable Objective Lenses & SVTA

PROBE	DOV	FOV	DOF	CODE
4.0mm	0°	60°	7-50mm	
4.0mm	0°	60°	4-10mm	SD
4.0mm	0°	90°	15mm-∞	
4.0mm	0°	90°	10-30mm	SD
4.0mm**	90°	60°	5-45mm	SVTA
6.0mm	0°	60°	5mm-∞	BLACK
6.0mm	0°	90°	5mm-∞	RED
6.0mm	0°	120°	3mm-∞	GREEN
6.0mm**	90°	60°	5-15mm	SVTA-CF
6.0mm**	90°	60°	15-50mm	SVTA-FF
8.0mm	0°	28°	25mm-∞	BLUE
8.0mm	0°	60°	8mm-∞	YELLOW-B
8.0mm	0°	60°	10mm-∞	BLACK
8.0mm	0°	90°	5mm-∞	SILVER-B
8.0mm	0°	90°	5mm-∞	RED
8.0mm**	90°	60°	5mm-∞	SVTA

DOV = Direction of View

FOV = Field of View

DOF = Depth of Focus

SVTA = Side View Tip Adapter

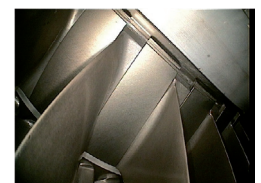
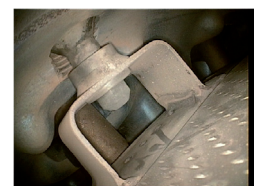
CF = Close Focus

FF = Far Focus

B = Bright objective lens

\*\* Compatible to FOV60 °

### Inspection images



IT Concepts GmbH  
Gewerbestr. 17  
D-35633 Lahnu

+49 6441 67 92 99-0  
+49 6441 67 92 99-99

info@itcworld.com  
www.itcworld.com



IP53